

The logo features the word "PASSAN" in a blue, serif, all-caps font. The text is centered within a white oval that has a blue border. This oval is superimposed on a horizontal band consisting of a light blue upper section and a darker blue lower section.

PASSAN

Katalog produktów
Gumy i gumokoronki



| | GKL - 12 | GKL - 14 |
|-----------|---------------------|---------------------|
| surowiec | polipropylen, latex | polipropylen, latex |
| rozmiar | 12 mm | 14 mm |
| MOQ | opakowanie 100 m | opakowanie 50 m |
| produkcja | PASSAN | PASSAN |

Karta kolorów

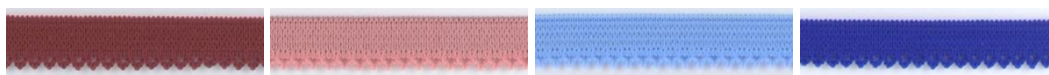


002

129

301

306

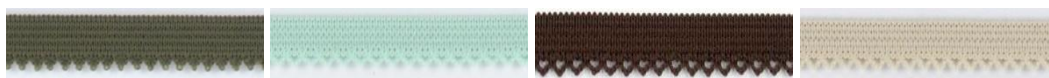


323

330

515

536



606

659

702 *

712



900

* tylko w GKL - 12



| | |
|-----------|-----------------------|
| | GKE - 16 |
| surowiec | polipropylen, elastan |
| rozmiar | 16 mm |
| MOQ | opakowanie 25m |
| | |
| produkcja | PASSAN |

Karta kolorów



002

129

306

323



330

515

536

659



702

712

801

900



306/002

323/002

330/002

712/002



| | |
|-----------|-----------------------|
| | GKE - 18 |
| surowiec | polipropylen, elastan |
| rozmiar | 18 mm |
| MOQ | opakowanie 100 m |
| | |
| produkcja | PASSAN |

Karta kolorów



002



900

Guma żyłkowa Z – 28/12

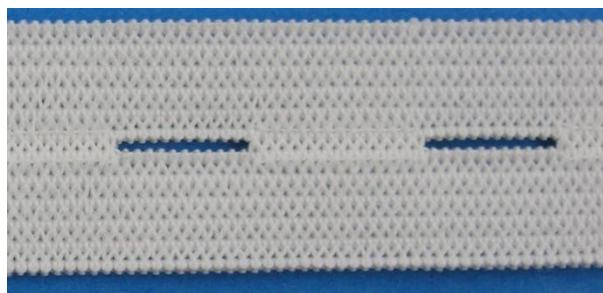


| | Z – 28/12/30 | Z – 28/12/31 |
|-----------|------------------|------------------|
| surowiec | PE,PA, lateks | PE,PA, lateks |
| rozmiar | 30 mm | 31 mm |
| MOQ | opakowanie 900 m | opakowanie 900 m |
| uciąg | 150-220 % | 150-220 % |
| produkcja | PASSAN | PASSAN |

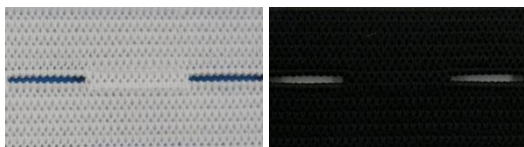


| | 28/15/23K | 28/19/28K | 28/20/30K | 28/23/34K |
|-----------|------------|------------|------------|------------|
| surowiec | PE, lateks | PE, lateks | PE, lateks | PE, lateks |
| rozmiar | 23 mm | 28 mm | 30 mm | 34 mm |
| MOQ | 1200 m | 1000 m | 1000 m | 900 m |
| uciąg | 150-220 % | 150-220 % | 150-220 % | 150-220 % |
| produkcja | PASSAN | PASSAN | PASSAN | PASSAN |

Guma guzikowa
TEG – 28/12/18K



| | Z – 28/12/30 |
|-----------|--------------|
| surowiec | PE, lateks |
| rozmiar | 18 mm |
| MOQ | 25 m |
| uciąg | 150-220 % |
| produkcja | PASSAN |



biały



czarny